

Construction Products

Cemex UK Cement/Rugby

Bagged Cement	264-265
Postmix	265
Miscellaneous	265

Essentials

Bagged Aggregates	266
Engineering Bricks	266
Reinforcement Mesh & Accessories	267
Timber	268
Concrete Blocks	268
Polythene DPM, DPC & Gas Barrier	269
Concrete Lintels	269
Telescopic Vents & Air-Bricks	270

Jablite

EPS Flooring Polystyrene	271
Claymaster	271

Inform

K-Form	272
--------	-----

Fillcrete

Fillaboard	273
Brickfill	273

CIVILS

CEMEX UK

Bagged Cement



Bagged Cement Rugby® CEMENT

Code	Mass/weight kg	Compliance with standard	Application information
10010263	25	BS EN 197-1	For use in Mortars, Screeds, Renders and Concrete. Can be used with Lime.



Rugby® PREMIUM CEMENT

Code	Mass/weight kg	Compliance with standard	Application information
10019696	25	BS EN 197-1	For use in Mortars, Screeds, Renders and Concrete. Has air-entraining agent added.

Rugby® PREMIUM CEMENT IN PLASTIC

10019696	25	BS EN 197-1	For use in Mortars, Screeds, Renders and Concrete. Has air-entraining agent added.
----------	----	-------------	--



Rugby® SULFATE CEMENT

Code	Mass/weight kg	Compliance with standard	Application information
10010266	25	BS EN 197-1	For use in Mortars, Screeds, Renders and Concrete. For use where Sulfates are present in the soil.



Rugby® HIGH STRENGTH

Code	Mass/weight kg	Compliance with standard	Application information
10016689	25	BS EN 197-1	For use where high strength is the primary concern. Suitable for use in Pre-casting, Mortars, Screeds and Concrete.



Rugby® HYDRATED LIME

Code	Mass/weight kg	Compliance with standard	Application information
10010288	25	BS EN 197-1	For use with Cement in Renders, Mortars. Can be used for soil stabilisation.



Rugby® WHITE CEMENT

Code	Mass/weight kg	Compliance with standard	Application information
10010285	25	BS EN 197-1	For use in Concretes, Mortars and Renders where a white decorative finish is required.

Please note: adequate protection must be worn when using/mixing cement. Suggested PPE. Eye protection, gloves. Avoid contact with skin.



Bagged Cement – Continued

Rugby® 40N GENERAL PURPOSE CONCRETE

Code	Mass/weight kg	Compliance with standard	Application information
10010268	25		For use in Mortars, Screeds, Renders and Concrete. Has air-entraining agent added.



Fast Set

Rugby® FAST SET CEMENT

Code	Mass/weight kg	Compliance with standard	Application information
10010282	25		Sets hard within 1 hour. Ideal for concrete, mortar, render and floor screed repairs



Postmix

Rugby® POSTMIX PROFESSIONAL

Code	Mass/weight kg	Compliance with standard	Application information
10016688	20		Quick setting concrete in a 20kg bag. Sets in 10-15mins. Just add water as described.



Miscellaneous

Rugby® BLACK BITUMEN MACADAM

Code	Mass/weight kg	Compliance with standard	Application information
10010281	25		A temporary patchwork repair Macadam using a 6mm aggregate. Only to be used as a repair. Not HAPAS approved.

Please note: adequate protection must be worn when using/mixing cement. Suggested PPE. Eye protection, gloves. Avoid contact with skin.

For tools and accessories...

Speak to a member of our team



Branch locations and contact details pages 439

Essentials

Bagged Aggregates / Engineering Bricks

Product description	Dimensions mm	Mass/weight kg
MOT Type 1		25kg (approx.) Bulk Bags (1 tonne approx.)
Ballast	10 and 20	25kg (approx.) Bulk Bags (1 tonne approx.)
Gravel / Chippings	10 and 20	25kg (approx.) Bulk Bags (1 tonne approx.)
Sharp Sand		25kg (approx.) Bulk Bags (1 tonne approx.)
Building Sand		25kg (approx.) Bulk Bags (1 tonne approx.)
Network Rail Approved Track Ballast		25kg (approx.) Bulk Bags (1 tonne approx.)

Please contact us to discuss your requirements.

Engineering Bricks

The high compressive strength and low water absorption properties and guaranteed durability of engineering bricks makes them ideal for use below ground level and damp proof courses.

Product description	Size	Pack Size
Solid	65	Contact a member of our team
	73	
Perforated	65	Contact a member of our team
	73	

Alternative sizes and specifications available upon request

**CAN'T FIND
WHAT YOU'RE
LOOKING FOR?**



Call us on 0870 600 60 68 or speak to your local branch

Reinforcement Mesh and Accessories

Standard Fabric Chart

BS Reference	Mesh size nominal Pitch of wires mm		Wire sizes mm		Cross sectional area per metre width mm ²		Nominal weight per m ² kg	Sheets per tonne (approx.)	Sheet weight kg	Sheets per bundle	Square metre per tonne
	Main	Cross	Main	Cross	Main	Cross					
	Standard sizes (4,800mm x 2,400mm)										
Square											
A 393	200	200	10	10	393	393	6.16	15	70.96	18	162.34
A 252	200	200	8	8	252	252	3.95	22	45.5	28	253.16
A 193	200	200	7	7	193	193	3.02	29	34.79	34	331.13
A 142	200	200	6	6	142	142	2.22	40	25.57	46	450.45
Structural											
B 1131	100	200	12	8	1131	252	10.9	8	125.57	10	91.74
B 785	100	200	10	8	785	252	8.14	11	93.57	14	122.85
B 503	100	200	8	8	503	252	5.93	15	68.31	18	168.63
B 385	100	200	7	7	385	193	4.53	20	52.19	24	220.75
B 283	100	200	6	7	283	193	3.73	24	42.97	30	268.1
Long											
C 785	100	400	10	6	393	71	6.72	13	77.41	16	148.81
C 636	100	400	9	6	636	71	5.55	16	63.94	20	180.18
C 503	100	400	8	6	503	71	4.51	20	51.96	26	221.73
C 385	100	400	7	6	385	71	3.58	25	41.24	30	279.33
C 283	100	400	6	6	283	71	2.78	32	32.03	32	359.71
Wrapping											
D 98	200	200	5	5	98	98	1.54	57	17.74	60	649.35
D 49	100	100	2.5	2.5	49	49	0.77	129	7.76	50	1,298.7
Merchant sizes (3,600mm x 2,000mm)											
A 393M	200	200	10	10	393	393	6.16	23	44.35	26	162.34
A 252M	200	200	8	8	252	252	3.95	35	28.44	30	253.16
A 193M	200	200	7	7	193	193	3.02	46	21.74	50	331.31
A 142M	200	200	6	6	142	142	2.22	63	15.98	50	450.45
A 785M	100	200	10	8	785	252	8.14	17	58.61	20	122.85

Essentials

Timber / Concrete Blocks

We supply a range of Timber products:

Treated Timber Carcassing

Structural Hardwood Ply

Pointed Peg Treated

Unseasoned Treated Timber Post

New Sleeper Treated

Formwork Untreated

Pine Ply

Please contact us to discuss your requirements.

We supply a range of Concrete Blocks:

100mm solid 7N*

140mm solid 7N*

140mm celular 7N*

215mm hollow 7N*

Please contact us to discuss your requirements.

* Different crushing strengths available upon request.

We stock a wide range of Construction Chemicals



Pages 242-262

Polythene DPM, DPC & Gas Barriers / Concrete Lintels

Polythene DPM, DPC & Gas Barriers

Product description	Size
Black Polythene DPC	Std Roll Length 30m Std Roll Widths From 100mm - 600mm
Pitch Polymer DPC	Std Roll Length 20m Std Roll Widths From 100mm - 600mm
Blue Polythene DPM 250mu, BBA	4x25m Roll
Blue Polythene DPM 300mu, BBA	4x25m Roll
Black Polythene DPM 250mu, BBA	4x25m Roll
Black Polythene DPM 300mu, BBA	4x25m Roll
Blue Polythene DPM 250mu, PIFA	4x25m Roll
Blue Polythene DPM 300mu, PIFA	4x25m Roll
Black Polythene DPM 250mu, PIFA	4x25m Roll
Black Polythene DPM 300mu, PIFA	4x25m Roll

Concrete Lintels

Product description	100x65 Length mm	100x140 Length mm
Pre-stressed Concrete Lintels	600	600
Pre-stressed Concrete Lintels	900	900
Pre-stressed Concrete Lintels	1,200	1,200
Pre-stressed Concrete Lintels	1,500	1,500
Pre-stressed Concrete Lintels	1,800	1,800
Pre-stressed Concrete Lintels	2,100	2,100
Pre-stressed Concrete Lintels	2,400	2,400
Pre-stressed Concrete Lintels	2,700	2,700
Pre-stressed Concrete Lintels	3,000	3,000

Produced to BS EN 845-2:2013 where appropriate.

For Geotechnical Products – please contact us to discuss your requirements.

For branch listing and all our contact information.

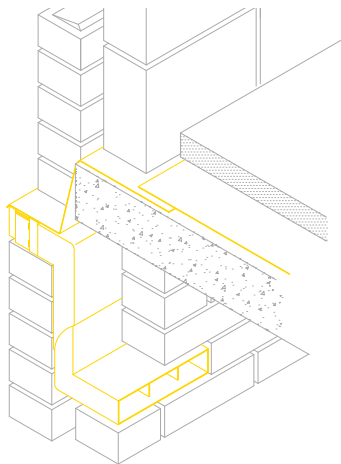
Branch locations and contact details Page 439

Essentials

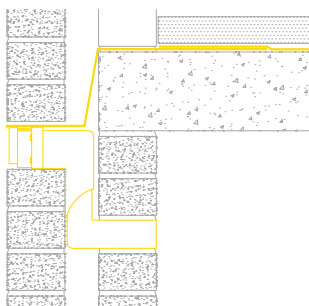
Telescopic Vents & Air-Bricks

Telescopic adjustable ventilator

- Unobstructed airflow route
- Extends and retracts to suit course level
- Horizontal and vertical extension sleeves

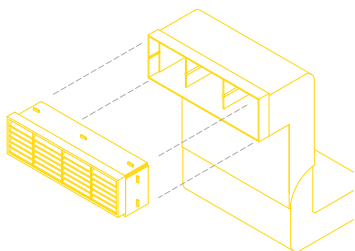


Size mm	Adjustment range mm	Colour
225 x 70 opening	375 / 225	Black



Air-brick

- High air throughput
- Insect screening
- Self-draining base
- Clip together to make up composite sizes
- Range of colours



Size mm	Free airflow rating mm ²	Colours
220 x 60 x 70	7,500	Terracotta
220 x 60 x 70	7,500	Slate
220 x 60 x 70	7,500	Beige
220 x 60 x 70	7,500	Brown
220 x 60 x 70	7,500	White
220 x 60 x 70	7,500	Black

Jabfloor Classic

Code	Length mm	Width mm	Depth/Height mm	Material	Colour	Grade
3788501000	2,400	1,200	25, 30, 40, 50, 60, 75, 100, 120, 150 and 200	EPS	White	70
3788501000	2,400	1,200	25, 30, 40, 50, 60, 75, 100, 120, 150 and 200	EPS	White	100
3788501000	2,400	1,200	25, 30, 40, 50, 60, 75, 100, 120, 150 and 200	EPS	White	150
3788501000	2,400	1,200	25, 30, 40, 50, 60, 75, 100, 120, 150 and 200	EPS	White	200
3788501000	2,400	1,200	25, 30, 40, 50, 60, 75, 100, 120, 150 and 200	EPS	White	350
3788501000	2,400	1,200	25, 30, 40, 50, 60, 75, 100, 120, 150 and 200	EPS	White	400
3788501000	2,400	1,200	25, 30, 40, 50, 60, 75, 100, 120, 150 and 200	EPS	White	500

Jabfloor Premium

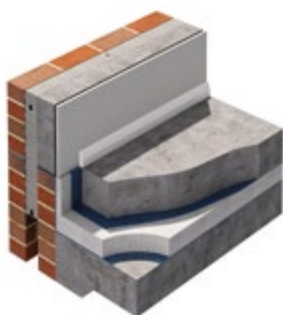
8780000	2,400	1,200	25, 30, 40, 50, 60, 75, 100, 120, 150 and 200	EPS	Premium	70
878100	2,400	1,200	25, 30, 40, 50, 60, 75, 100, 120, 150 and 200	EPS	Premium	100

This product complies with BS EN 13163:2012. EPS insulation for use in floor construction.

Jablite Claymaster

Code	Length mm	Width mm	Depth/Height mm	Material	Colour	Grade
376970	2,400	1,200 and 600	50, 75, 100, 150, and 200	EPS	Pink	N/A

This product complies with BS EN 14933:2007. Compressible fill material intended for vertical.



Jabfloor Classic



Jablite Claymaster

K-Form UPVC screed railing provides the construction industry with an economical, efficient and environmentally friendly alternative to steel and timber formwork.

Made from recycled materials, K-Form is lightweight, durable and does not require removal after placement of concrete. It is easily cut to length on site and has pre-drilled holes in the vertical face for placing steel dowels bars and in the base for anchoring. K-Forms patented design features a removable top strip for joint sealing and its unique end clips allow for quick and easy installation.

Intended to be used with all types of screeds including; twin beams, bunyan rollers, vibro strikes, etc. K-Form's K135, K85 and K35 sacrificial railing replaces steel forms where joints are needed.

Screed Rails / Extension Strips

Product description	Code	Length mm	Width mm	Depth/Height mm	Diameter mm	Mass/weight kg	Material	Colour
K135 Screed Rail	SKF135	3,000 inc. removable strip and two Domino clips	160 at base	140 inc. removable strip (10)	10	3.99	UPVC	White
K85 Screed Rail	SKF85	3,000 inc. removable strip and two Domino clips	160 at base	95 inc. removable strip (10)	10	3.81	UPVC	White
K35 Screed Rail	SKF35	3,000 inc. removable strip and two Domino clips	160 at base	45 inc. removable strip (10)	10	1.95	UPVC	White
K-Form Extension Strip	SKFTE25	3,000	12	25	12	0.16	UPVC	White



K135 Screed Rail



K85 Screed Rail



K35 Screed Rail



K-Form Extension Strip

Fillboard
Bitumen Impregnated Expansion joints

Code	Length mm	Width mm	Material	Colour	Thickness mm	Pack Size
12FSH8X4	2440	1220	Woodfibre	Brown	12	Sheet
19FSH8x4	2440	1220	Woodfibre	Brown	19	Sheet
25FSH8x4	2440	1220	Woodfibre	Brown	25	Sheet
12FST75	2440	75	Woodfibre	Brown	12	Pack of 20
12FST100	2440	100	Woodfibre	Brown	12	Pack of 20
12FST125	2440	125	Woodfibre	Brown	12	Pack of 10
12FST150	2440	150	Woodfibre	Brown	12	Pack of 10
12FST175	2440	175	Woodfibre	Brown	12	Pack of 10
12FST200	2440	200	Woodfibre	Brown	12	Pack of 10
12FST225	2440	225	Woodfibre	Brown	12	Pack of 10
19FST100	2440	100	Woodfibre	Brown	19	Pack of 12
19FST150	2440	150	Woodfibre	Brown	19	Pack of 6
19FST175	2440	175	Woodfibre	Brown	19	Pack of 6
19FST200	2440	200	Woodfibre	Brown	19	Pack of 6
25FST100	2440	100	Woodfibre	Brown	25	Pack of 10
25FST150	2440	150	Woodfibre	Brown	25	Pack of 5
25FST200	2440	200	Woodfibre	Brown	25	Pack of 5



Brickfill
Closed cell polyethylene brick expansion joints

Code	Length mm	Width mm	Material	Colour	Thickness mm	Pack Size
10BFR100P	10,000	100	Polyethylene	White	10	Pack of 10
10BFR150P	10,000	150	Polyethylene	White	10	Pack of 10
12BFR100P	10,000	100	Polyethylene	White	12	Pack of 10
12BFR150P	10,000	150	Polyethylene	White	12	Pack of 10

Can't find what you're looking for?



Call us on 0870 600 60 68 or speak to your local branch